

# RENTAL LINE CARD

Operated and Maintained for Savings!



## DOZERS

- ▶ D8T Dozer
- ▶ D6T Dozer
- ▶ D4XL Dozer
- ▶ Slope Board



## SCRAPERS

- ▶ 613 Paddle Wheels
- ▶ 623 Paddle Wheel
- ▶ 637 Push/Pull
- ▶ TS24B Push/Pull



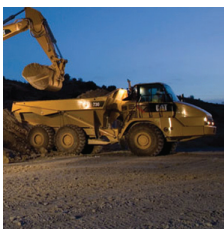
## COMPACTORS

- ▶ 824C Rubber Tire Dozer
- ▶ 563E Sheeps Foot Roller
- ▶ CAT 36" Double Drum Roller



## BACKHOES

- ▶ 430 E Backhoe



## ARTICULATED DUMP TRUCKS

- ▶ CAT 400 E



## WHEEL LOADERS

- ▶ 950G Wheel Loader
- ▶ 966G Wheel Loader
- ▶ 980G Wheel Loader



## EXCAVATORS

- ▶ 330B
- ▶ 345B



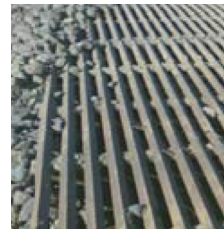
## WATER EQUIPMENT

- ▶ Water Towers
- ▶ Hurricane Pumps
- ▶ Water Truck 2000



## SKIP LOADERS

- ▶ Deere 210LE



## TRACK OUT PLATES

- ▶ 8' x 10'



## MECHANICAL REPAIRS

- ▶ HDR Services

Call for Pricing

20330 TEMESCAL CANYON RD., CORONA, CALIFORNIA 92881

P.O. BOX 78837, CORONA, CALIFORNIA 92877

TEL 951-736-7707 FAX 951-736-7706

UNPARALLELED EXPERIENCE  
INTEGRATED TECHNOLOGY  
VALUE YOU CAN MEASURE



P.O. BOX 78837, CORONA, CA 92877



#### OPERATED EQUIPMENT

- All rentals subject to transportation fees
- Subject to terms and conditions of rental agreement
- All rentals subject to 4 hour minimum (excludes excavators)
- Insurance certificates available upon request
- Rates subject to change without notice
- Wages based on current union contract
- Operator rate
- Operator overtime +8 or sat.
- Operator double time +12 or sun
- HAZMAT/LARSO clean card operators available

#### BARE EQUIPMENT

- All rentals subject to transportation fees
- Subject to terms and conditions of rental agreement
- Insurance certificates required for all rentals
- Rates subject to change without notice
- Customer responsible for lubrication and fuel unless previously agreed to in writing.
- Extra teeth charge on all backhoes, loaders and excavators
- All tire repairs are the responsibility of the customer
- Equipment returned excessively dirty or with contaminated materials will be charged appropriate cleaning fees

Call for Pricing